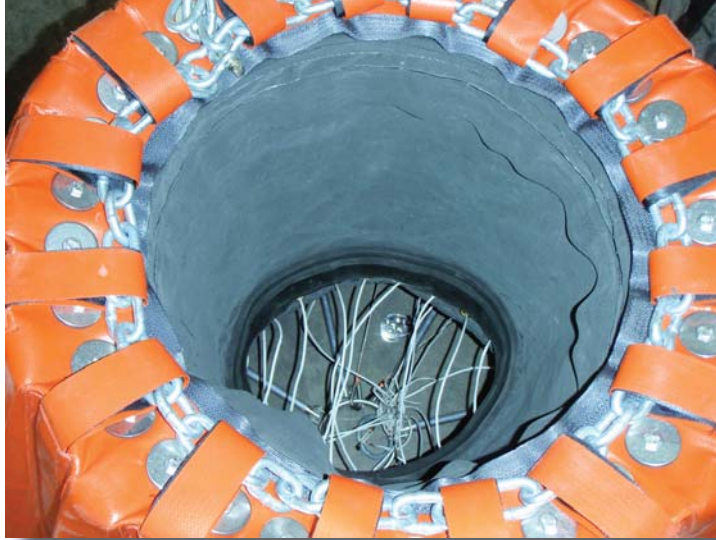
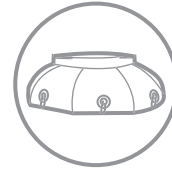


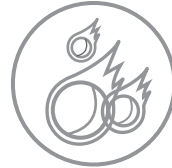
BAMBI BUCKET ZIPPER VALVE INSTALLATION MANUAL



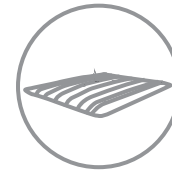
Bambi Bucket



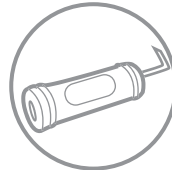
Fireflex



Dragon



Remote Site



Environmental



Emergency Response



Bambi Zipper Valve Installation

SEI Industries replacement valves come complete with new purse lines, bolts, nuts, washers and butyl rubber sealant.

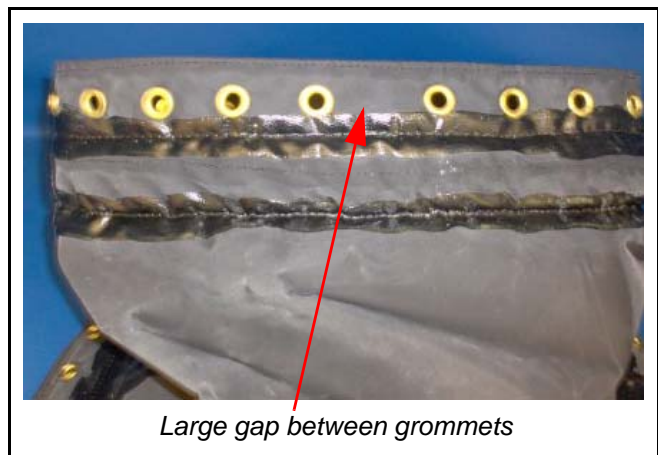
To replace a valve:

1. Remove the old valve as well as all butyl tape and ballast
2. Stand the bucket up with the valve hole on the bottom.
3. Apply a 1/2" x 1/8" (13 mm x 3 mm) bead of butyl rubber sealant in a circle around the inside of the bucket shell, just above the valve grommets, to make a seal between the shell fabric and the dump valve fabric.
4. Place the large stainless washer and then the rubber washer onto the bolt. Insert the bolt up from outside of shell.



5. Close the mouth of the new valve.

6. There are two grommets at the top of the valve at opposite sides that are spaced further apart. This is where the valve folds flat. When the valve is folded flat, the seam will be in the middle of the top or bottom surface and the grommets at the top will line up. Now, mark the flange at the gap location.



CAUTION

If you are replacing the upper tube on an existing zipper valve, make sure to clean the zipper on both sides with a stiff brush and lubricate it with WD40 or a similar product. See the Bambi operations manual for more information on valve installation, if required.

7. Unzip upper tube from flange. Install the bottom flange. Place the flange onto the bolts, keeping the marks parallel to the ballast. Install the fasteners and snug up the nuts until two threads of the bolt shows. Do not over tighten.



8. Install purse strings in the tube. Tie purse strings to the ring.



9. Turn tube inside out.



10. Insert zipper end through the slider into "start end" and pull zipper nearly closed (about three inches from the closed position).

Caution: Do not force zipper. Hold both sides in line together allowing the slider to move easily.



11. Insert foam sealing strip.



12. Move slider until it hits the stops.



13. Push upper tube down into the shell. Attach the ring and riser to the trip line. The installation is now complete.

